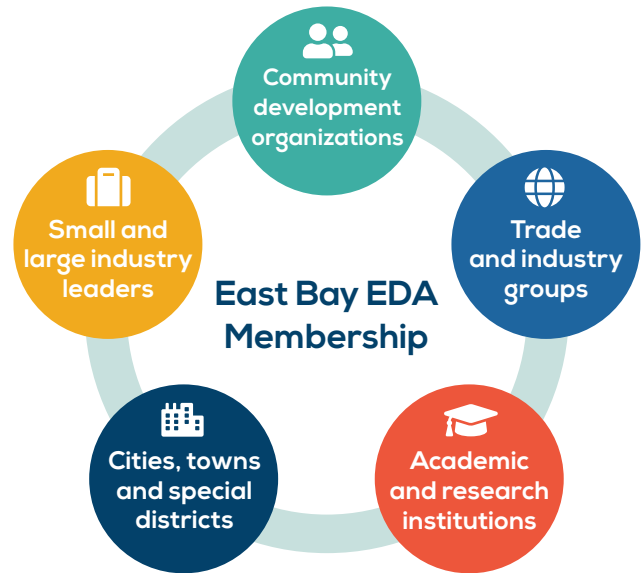




# East Bay Economic Development Alliance

(East Bay EDA)

The East Bay EDA is a cross-sector, public-private partnership that promotes strategic economic development throughout Alameda and Contra Costa Counties. We convene diverse networks of businesses, local government, and community leaders who embrace the extraordinary value of our region as an unrivaled place to live, work, and do business. East Bay EDA champions regional collaboration through direct business services, legislative advocacy and regional networking by connecting efforts that support a healthy and vibrant economy.



## BECOME A MEMBER



Join the premier network of public and private sector leaders working to promote and strengthen the East Bay's economic success.

**As a member of East Bay EDA, you will have opportunities to:**



### Network

Expand your network and connect with high-level public and private sector decision-makers at member meetings and events.



### Lead

Lend your talent to our diverse committees and collaborate with other cross-sector partners to strengthen and promote the region.



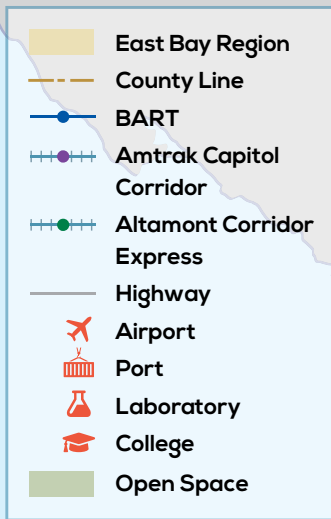
### Brand

Elevate your brand and receive VIP recognition to boost visibility for your company as a champion for economic vitality of the region.



### Influence

Use your position to lead the East Bay voice on critical positions and priorities for the region.



## Regional Assets

### Higher Education

12 Public Colleges and Universities

### World-class R&D Institutions

The East Bay's Berkeley Lab, Sandia Labs, Lawrence Livermore National Laboratory and UC Berkeley provide a strong talent pipeline, technology transfer and entrepreneurship for our robust innovation ecosystem.

### Three International Airports

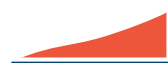
Proximity to three international airports including OAK, SFO, SJC. OAK is served by 14 airlines with 67 nonstop destinations.

### Two International Seaports

The Port of Oakland is the 8th busiest container port in the U.S. with 20 shipping lanes and 33 cranes. The Port of Richmond ranks #1 in liquid bulk and automobile tonnage.

### Regional Mass Transit

The East Bay is home to 34 out of 48 BART stations, 8 Capitol Corridor stations and 4 ferry terminals.



Population  
**2.8 million**  
(2020)

Over the last decade, the East Bay's population **increased by 300,000.**



Employment  
**1.2 million**  
(2019)

The East Bay accounted for nearly **30% of total job growth in the San Francisco Bay Area since 2014.**



Educational Attainment  
**45%**  
B.A. or higher

**45%** of East Bay's population aged 25+ has a **bachelor's degree or higher** (compared to 33% statewide).



Venture Capital  
**\$5.4 billion**  
(2020)

For the past 20 consecutive years, the East Bay has attracted **more venture capital than at least 44 states.**